

ami loves gurumi

The crazy universe behind the horizon

Iron Man Crochet Pattern



Design von K. Godinez

Material:

- crochet hook size 2.5
- wool in shades of red, yellow , ecru
- fiberfill
- 2 eyes of glass or plastic (safety eyes)
- sewing needle
- white felt
- thin elastic band
- 1 button as a “laser” on his chest, 2 red small buttons for the helmet

Size: Iron Man is about 28 cm (11 inches) tall.

Abbreviations:

ch - chain

st - stitch

R - round

sc – single crochet

Number x sc – the number tells you how many times you make a single crochet in each stitch

inc - two single crochet in one stitch

dec - two stitches crochet together

dc – double crochet

sl st - slip stitch

rep - repeat until end of round

BLO – back loops only

FLO – front loops only

Note:

Unless indicated otherwise, parts are worked in rounds for the Iron Man. You can start with 2 ch or make a magic ring. It is important to mark the beginning of your round.

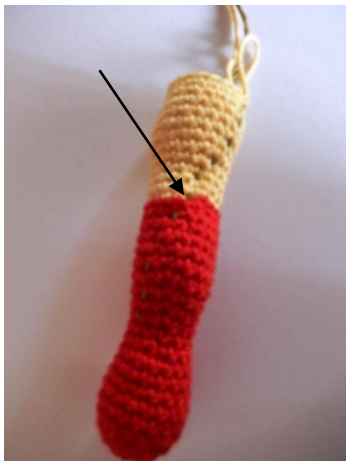
Legs (2 x)

R 01	8 x ch in color red	
R 02	start in the second ch from hook and work around, 6 x sc, 3 x sc in one stitch, continue working on the other side of the chain: 6 x sc, 3 x sc in one stitch	18
R 03	continue crocheting in a circle: 6 x sc, 3 x inc, rep	24
R 04	8 x sc, 3 x inc, 9 x sc, 3 x inc, sc	30
R 05	sc in each stitch	30
R 06	8 x sc, 3 x dec, 16 x sc	27
R 07	7 x sc, 3 x dec, 14 x sc	24
R 08	7 x sc, 2 x dec, 13 x sc	22
R 09	4 x sc, 4 x dec, 10 x sc	18

R 10	4 x sc, 2 x dec, 10 x sc	16
R 11	13 x sc, dec, sc	15
R 12	sc in each stitch	15
R 13	5 x sc, dec, 6 x sc, inc, sc	15
R 14	13 x sc, inc, sc	16
R 15	14 x sc, inc, sc	17
R 16	15 x sc, inc, sc	18
R 17	sc in each stitch	18
R 18	sc in each stitch	18
R 19	sc in each stitch, stuff the leg	18
R 20	16 x sc, dec	17
R 21	sc in each stitch	17
R 22	15 x sc, dec, change color to yellow	16
R 23	<u>BLO</u> : sc in each stitch	16
R 24	sc in each stitch	16
R 25	dec, 14 x sc	15
R 26	sc in each stitch	15
R 27	inc, 4 x sc, rep	18
R 28	sc in each stitch	18
R 29	5 x sc, inc, rep	21
R 30	sc in each stitch	21
R 31	sc in each stitch	21
R 32	sc in each stitch, stuff the leg	21
R 33	5 x sc, dec, rep	18
R 34	sc in each stitch	18
	sl st, cut the thread	

Upper part of the boot: with color red: start in the back of the leg where the color has changed, make a sl st, then continue with:

R 1	7 x sc, dc, 2 x dc in one stitch, dc, 6 x sc
R 2	sc in each stitch
R 3	sc in each stitch, at the end close with a sl st





Hold both legs together, so that they are parallel to each other. Then connect the legs with sl st and we continue with the

Body

R 35	36 x sc	36
R 36	7 x sc, dec, 8 x sc, 2 x inc, 8 x sc, dec, 7 x sc	36
R 37	sc in each stitch	36
R 38	7 x sc, dec, 18 x sc, dec, 7 x sc	34
R 39	sc in each stitch	34
R 40	sc in each stitch	34
R 41	sc in each stitch	34
R 42	sc in each stitch	34
R 43	sc in each stitch	34
R 44	sc in each stitch	34
R 45	sc in each stitch	34
R 46	sc in each stitch	34
R 47	sc in each stitch	34
R 48	sc in each stitch	34
R 49	11 x sc, inc, 16 x sc, inc, 5 x sc	36
R 50	5 x sc, inc, rep	42
R 51	sc in each stitch	42
R 52	sc in each stitch	42
R 53	sc in each stitch	42
R 54	sc in each stitch	42
R 55	sc in each stitch	42
R 56	sc in each stitch	42
R 57	4 x sc, dec, rep	35
R 58	9 x sc, 3 x dec, 12 x sc, 3 x dec, 2 x sc	29
R 59	7 x sc, 3 x dec, 9 x sc, 3 x dec, sc	23
R 60	8 x sc, dec, 10 x sc, dec	21
R 61	5 x sc, dec, change color to ecru	18

and ... it goes on with the

Head

R 62	<u>BLO</u> : 4 x sc, dec, rep	15
R 63	sc in each stitch	15
R 64	4 x sc, inc, 10 x sc	16
R 65	10 x inc, 6 x sc	26
R 66	sc in each stitch	26
R 67	6 x sc, <u>4 x (sc, inc)</u> , 12 x sc	30
R 68	4 x sc, inc, rep	36
R 69	sc in each stitch	36
R 70	5 x sc, inc, rep	42
R 71	sc in each stitch	42
R 72	sc in each stitch	42
R 73	sc in each stitch	42
R 74	sc in each stitch	42
R 75	sc in each stitch	42
R 76	10 x sc, dec, 15 x sc, dec, 12 x sc	40
R 77	sc in each stitch	40
R 78	8 x sc, dec, rep	36
R 79	4 x sc, dec, rep	30
R 80	3 x sc, dec, rep	24

Attention: Before the head is completely crocheted, attach the Safety Eyes slightly above the center of the head.

R 81	2 x sc, dec, rep, <u>stuff the head</u>	18
R 82	sc, dec, rep	12
R 83	dec, rep	6

sl st, cut the thread and close the opening. Embroider eyebrows, beard and mouth.



Arms (there is a right and a left arm, the pattern for the left arm is enclosed in the brackets and is shown in italics)

2 ch in Farbe rot

R 01	4 x sc	4
R 02	inc in each stitch	8
R 03	sc, inc, rep	12
R 04	sc in each stitch	12
R 05	sc in each stitch	12
R 06	sc in each stitch	12
R 07	sc, 3 x ch, skip a stitch, 10 x sc	
R 08	sc, than go ahead and make (don't crochet underneath the chain go inside) 3 x sc, 10 x sc	14
R 09	sc in each stitch	14
R 10	Right Arm: 5 x sc, dec, rep / (<i>Left Arm: dec, 5 x sc, rep</i>)	12
R 11	Right Arm: 4 x sc, dec, rep / (<i>Left Arm: dec, 4 x sc, rep</i>)	10
R 12	sc in each stitch	10
R 13	sc in each stitch	10
R 14	Right Arm: 4 x sc, inc, rep / (<i>Left Arm: inc, 4 x sc, rep</i>)	12
R 15	Right Arm: 5 x sc, inc, rep / (<i>Left Arm: inc, 5 x sc, rep</i>)	14
R 16	Right Arm: 6 x sc, inc, rep / (<i>Left Arm: inc, 6 x sc, rep</i>)	16
R 17	Right Arm: 3 x sc, inc, rep / (<i>Left Arm: inc, 3 x sc, rep</i>)	20
R 18	sc in each stitch	20
R 19	Right Arm: 3 x sc, dec, rep, <u>change color to yellow</u> (<i>Left Arm: dec, 3 x sc, rep</i>) <u>change color to yellow</u>	16
R 20	<u>BLO:</u> Right Arm: 2 x sc, dec, rep / (<i>Left Arm: dec, 2 x sc, rep</i>)	12
R 21	sc in each stitch	12
R 22	sc in each stitch	12
R 23	sc in each stitch, <u>change color to red</u>	12
R 24	<u>BLO:</u> Right Arm: 2 x sc, inc, rep / (<i>Left Arm: inc, 2 x sc, rep</i>)	16
R 25	Right Arm: 3 x sc, inc, rep / (<i>Left Arm: inc, 3 x sc, rep</i>)	20
R 26	Right Arm: 4 x sc, inc, rep / (<i>Left Arm: inc, 4 x sc, rep</i>)	24
R 27	sc in each stitch, stuff the arm	24
R 28	Right Arm: 4 x sc, dec, rep / (<i>Left Arm: dec, 4 x sc, rep</i>)	20
R 29	Right Arm: 3 x sc, dec, rep / (<i>Left Arm: dec, 3 x sc, rep</i>)	16
R 30	Right Arm: 2 x sc, dec, rep / (<i>Left Arm: dec, 2 x sc, rep</i>), stuff it again	12
R 31	dec in each stitch	6

sl st, cut the thread.

Thumb

With color red: start where the chain of the arm was crocheted at R 07 and go on in a circle:

R 01	7 x sc
R 02	7 x sc
R 03	5 x sc, dec, dec, sl st

Chest cover (2 x)

The chest cover is not crocheted in rounds!

With color red: 14 x ch

R 01	13 x sc, ch, turn	13
R 02	13 x sc, ch, turn	13
R 03	inc, 12 x sc, ch, turn	14
R 04	sc in each stitch, ch, turn	14
R 05	12 x sc, dec, ch, turn	13
R 06	sc in each stitch, ch, turn	13
R 07	11 x sc, dec, ch, turn	12
R 08	10 x sc, dec, ch, turn	11
R 09	sc in each stitch, ch, turn	11
R 10	9 x sc, dec, ch, turn	10
R 11	dec, 8 x sc, ch, turn	9
R 12	7 x sc, dec, ch, turn	8
R 13	inc, 7 x sc, ch, turn	9
R 14	8 x sc, inc, ch, turn	10
R 15	inc, 9 x sc, ch, turn	11
R 16	sc in each stitch, ch, turn	11
R 17	inc, 10 x sc, ch, turn	12
R 18	inc, 11 x sc, ch, turn	13
R 19	sc in each stitch, ch, turn	13
R 20	inc, 12 x sc, ch, turn	14
R 21	sc in each stitch, ch, turn	14
R 22	12 x sc, dec, ch, turn	13
R 23	sc in each stitch, ch, turn	13
R 24	sc in each stitch	13

Cut the thread

Helmet

2 ch in color red

R 01	6 x sc	6
R 02	inc in each stitch	12
R 03	sc, inc, rep	18
R 04	2 x sc, inc, rep	24
R 05	3 x sc, inc, rep	30
R 06	4 x sc, inc, rep	36

R 07	6 x sc, ch, turn	6
R 08	6 x sc, ch, turn	6
R 09	dec, 2 x sc, dec, ch, turn	4
R 10	4 x sc, ch, turn	4
R 11	2 x dec, cut the tread	2



In row 06, start in the last stitch, where you have made already a sc

R 01	32 x sc	32
R 02	dec, 28 x sc, dec	30
R 03	dec, 26 x sc, dec	28
R 04	dec, 24 x sc, dec	26
R 05	dec, 22 x sc, dec	24
R 06 – R 11	sc in each stitch	24
R 12	11 x sc, dec, 11 x sc	23
R 13	sc in each stitch	23
R 14	9 x sc, dec, sc, dec, 9 x sc	21
R 15	sc in each stitch	21

sl st, cut the tread

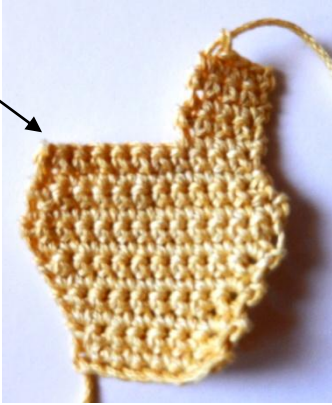
Mask

The mask is not crocheted in rounds:

8 ch in color yellow

R 01	7 x sc, ch, turn	7
R 02	7 x sc, ch, turn	7
R 03	inc, 5 x sc, inc, ch, turn	9
R 04	9 x sc, ch turn	9
R 05	inc, 7 x sc, inc, ch, turn	11
R 06	11 x sc, ch, turn	11
R 07	inc, 9 x sc, inc, ch, turn	13
R 08	13 x sc, ch, turn	13
R 09	13 x sc, ch, turn	13
R 10	dec, 9 x sc, dec, ch, turn	11
R 11	11 x sc, ch, turn	11
R 12	11 x sc, ch, turn	11

R 13	4 x sc, ch, turn	4
R 14	4 x sc, ch, turn	4
R 15	4 x sc, ch, turn	4
R 16	4 x sc, cut the thread	4



start in row 13 on the other side

R 13	4 x sc, ch, turn
R 14	4 x sc, ch, turn
R 15	4 x sc, ch, turn
R 16	4 x sc,

Go around the mask now and crochet sc in each stitch (3 x sc at the edges) cut the tread

Round side part for the hip (2 x)

2 ch in color red

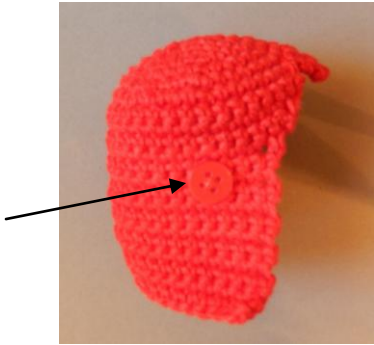
R 01	6 x sc	6
R 02	inc in each stitch	12

sl st, cut the thread

Finishing



1. Sew the left and the right arm to the body.
2. Sew on each side of the helmet a button.



3. Attach the helmet to the head and sew it.
4. Put the chest cover on the body and sew one on front and one in the back.



5. Attach a button (Laser) on the center of the chest
6. Cut out of the felt the shape of the mask and the "eye openings". Sew the eye openings in front of the mask and embroider the mouth. Sew the felted shape of the mask on the back.



7. Embroider the elastic band around the mask, one in the upper part and one in the lower part of the mask. Tighten the elastic band slightly, so that the mask curves a little bit. Leave the elastic bands on the side, they will be attached later to the helmet.



8. Place the mask on the head and wrap the elastic bands around the button and tie them.



9. Sew the side parts on the hip. When you sew them, pull the thread through the hole doll and tighten the thread a little, so that the hips come closer to each other.



Congratulations! You did it. Your Iron Man is ready!

Do not copy or post this pattern without my permission. Don't translate this pattern into another language for reselling or publishing on the internet. You can sell a small number of the finished item on markets or local stores.

The "Iron Man" is a copyrighted character of Marvel. This pattern is copyrighted by Karin Godinez (amilovesgurumi.wordpress.com).