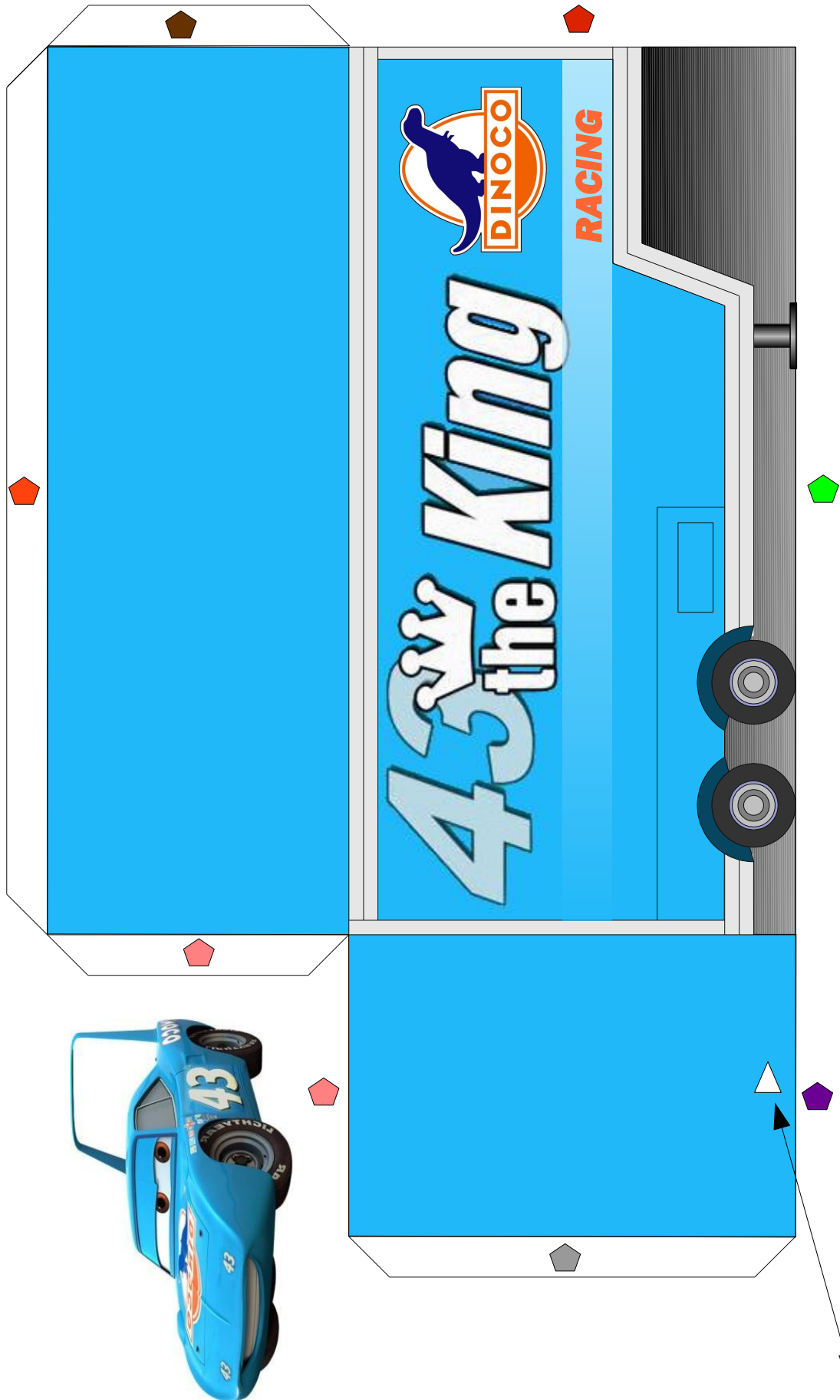
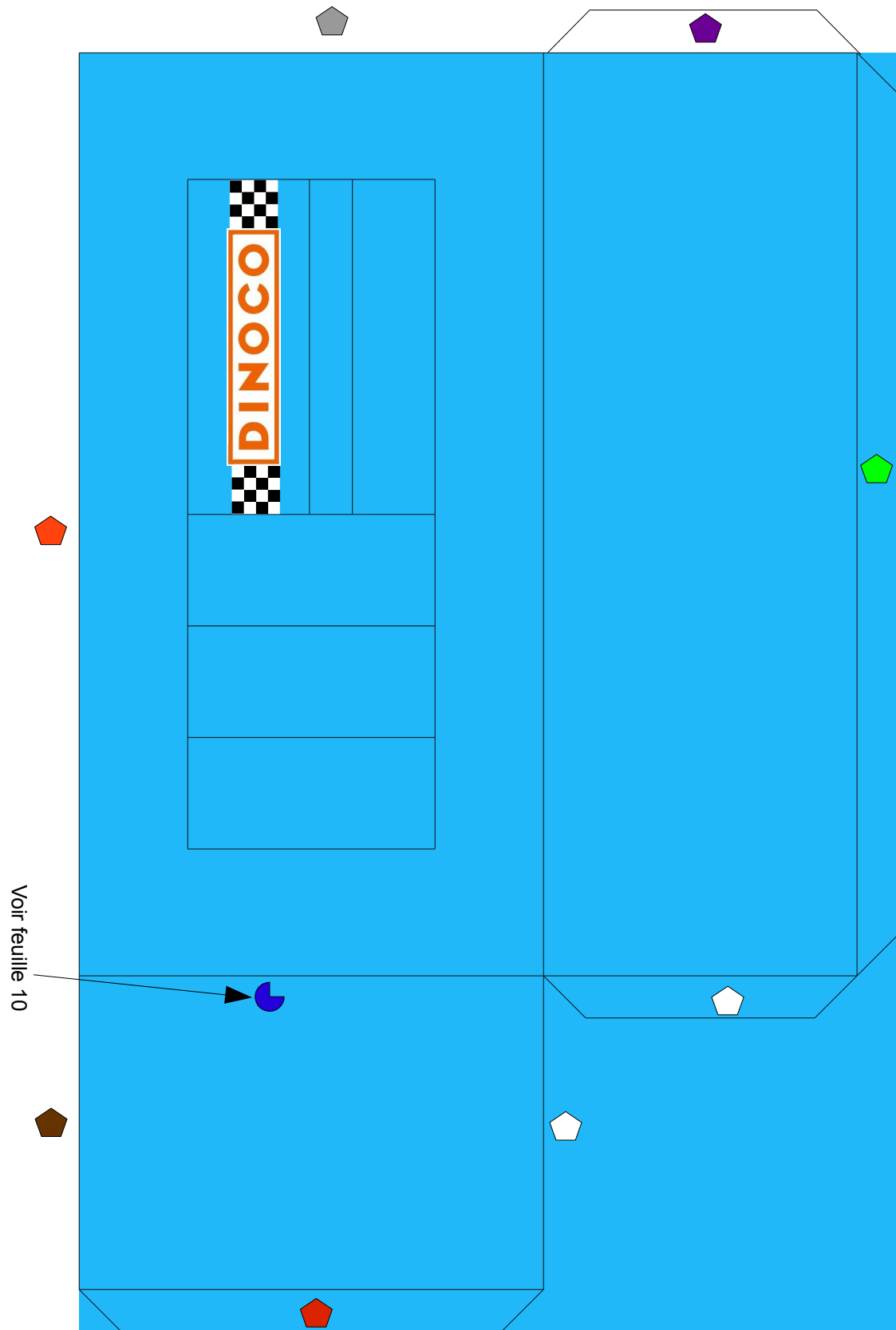


Camion droit 1/2



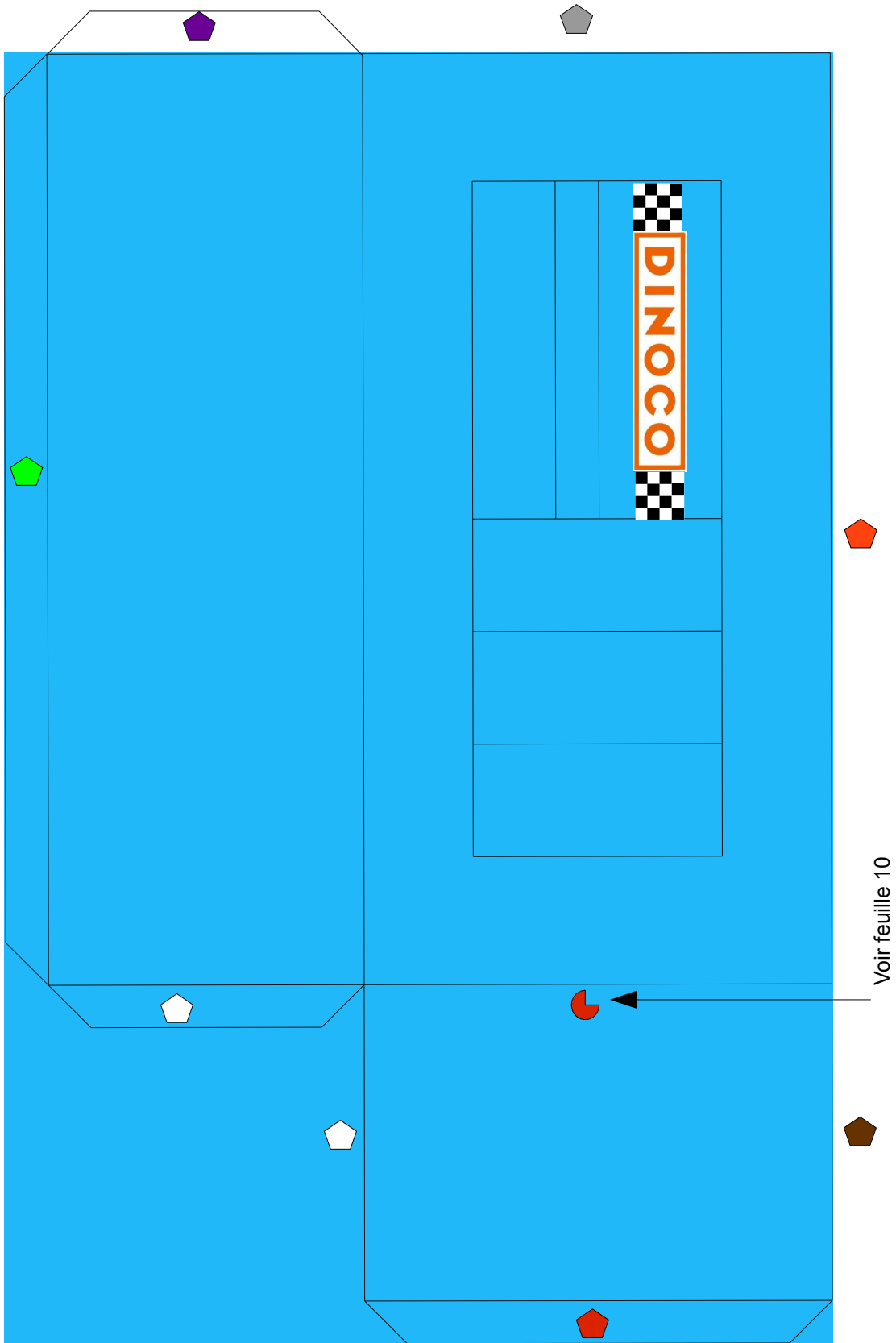
Voir feuille 11

Camion droit 2/2

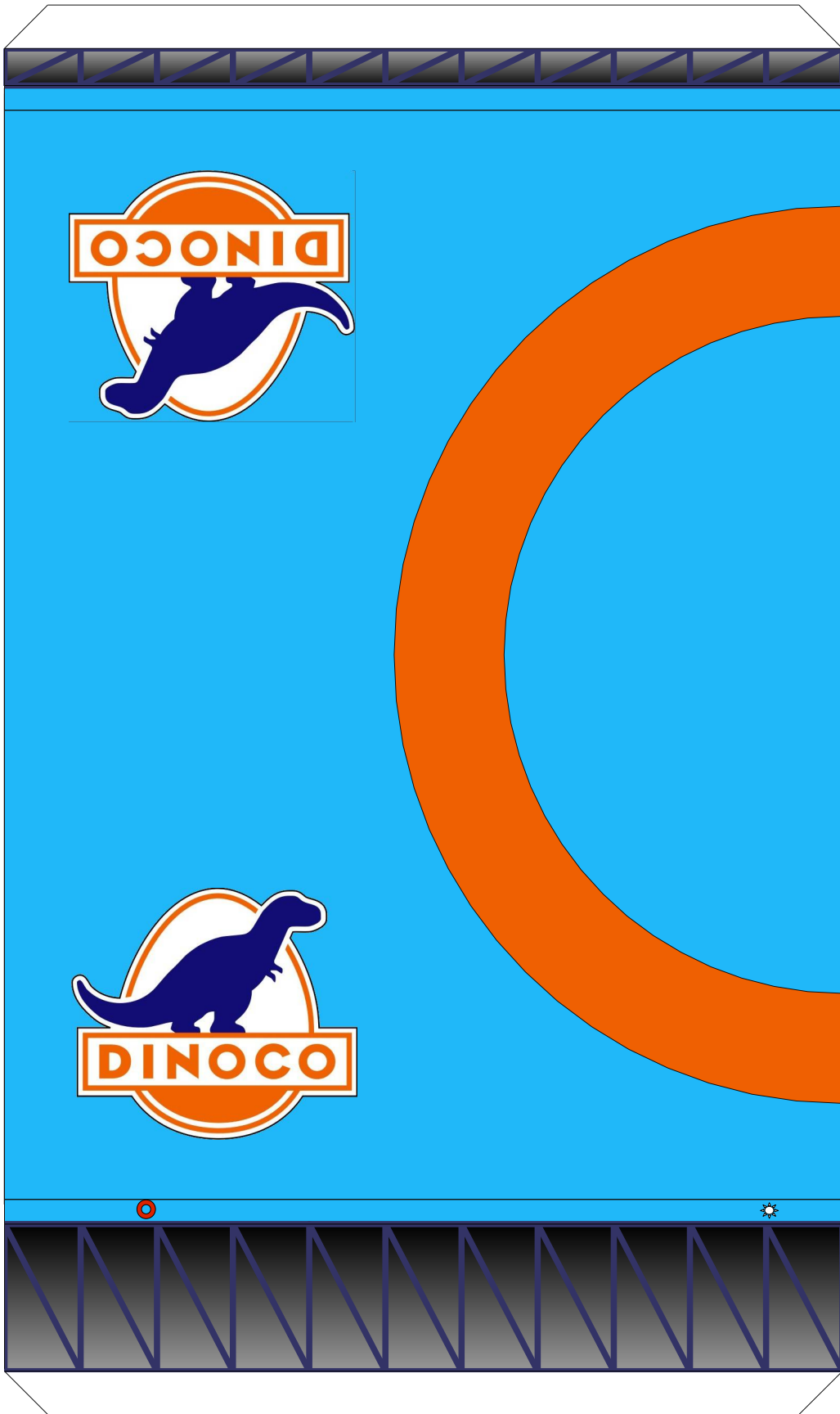


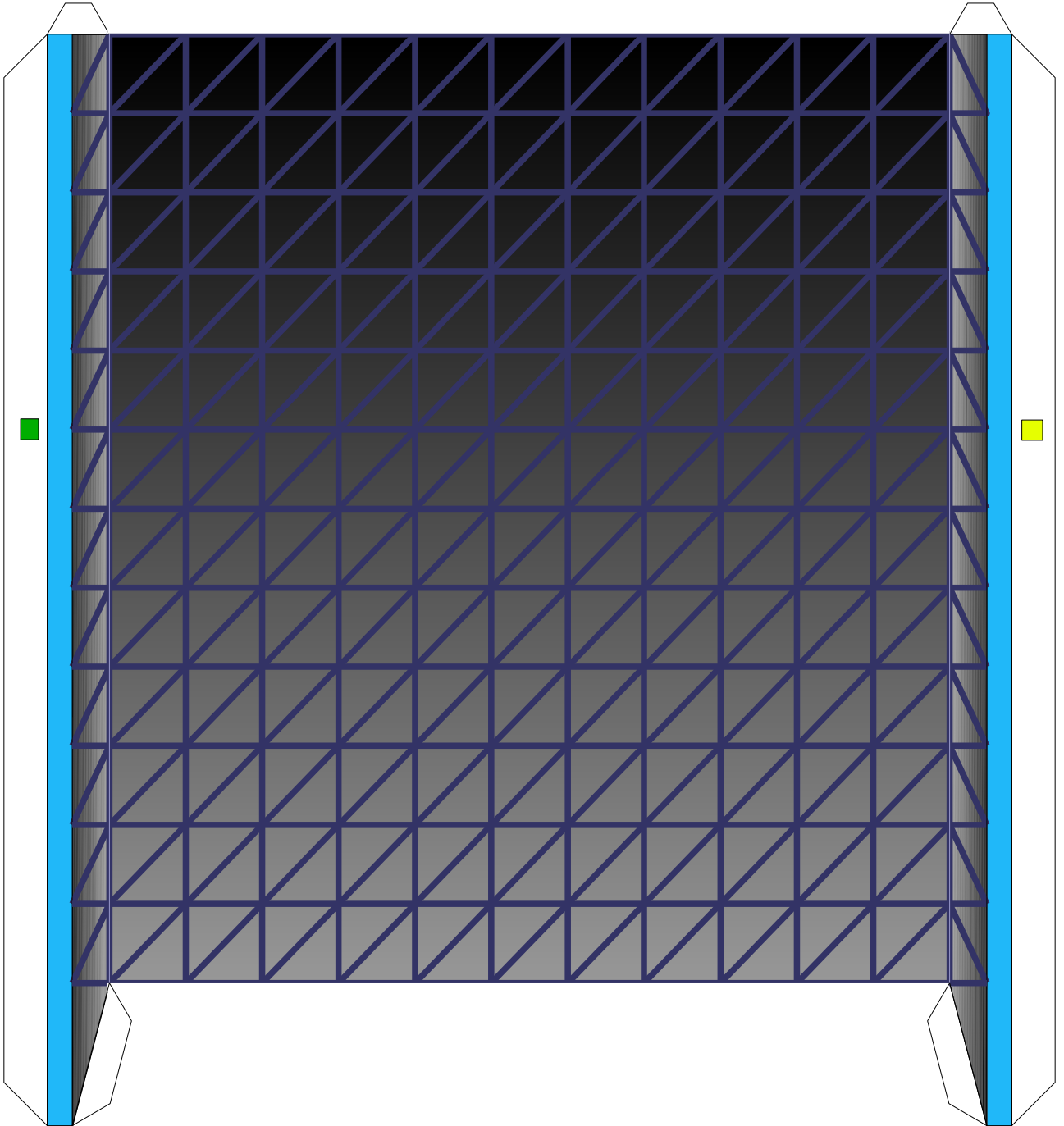


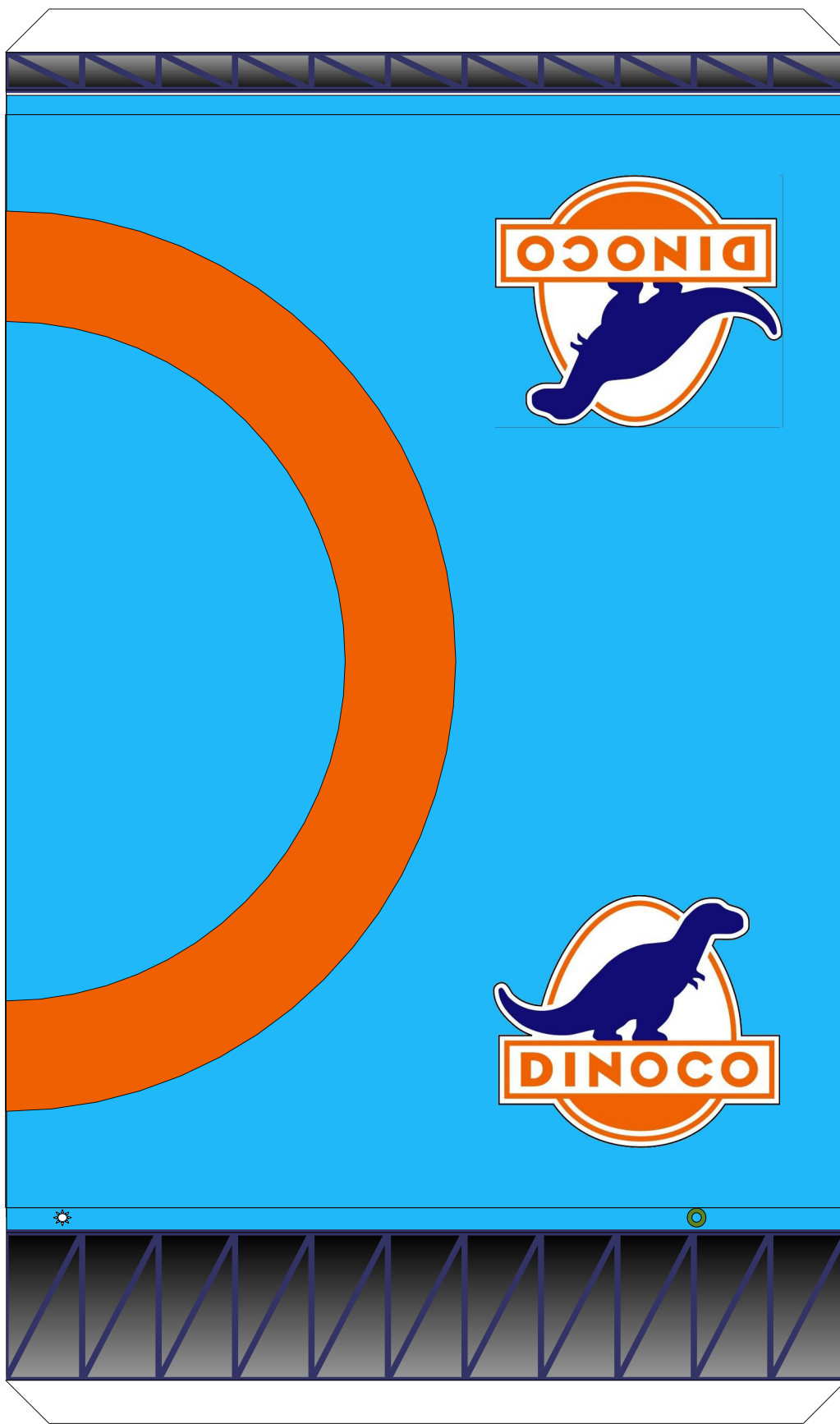
Camion gauche 2/2

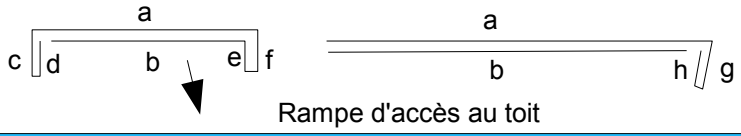
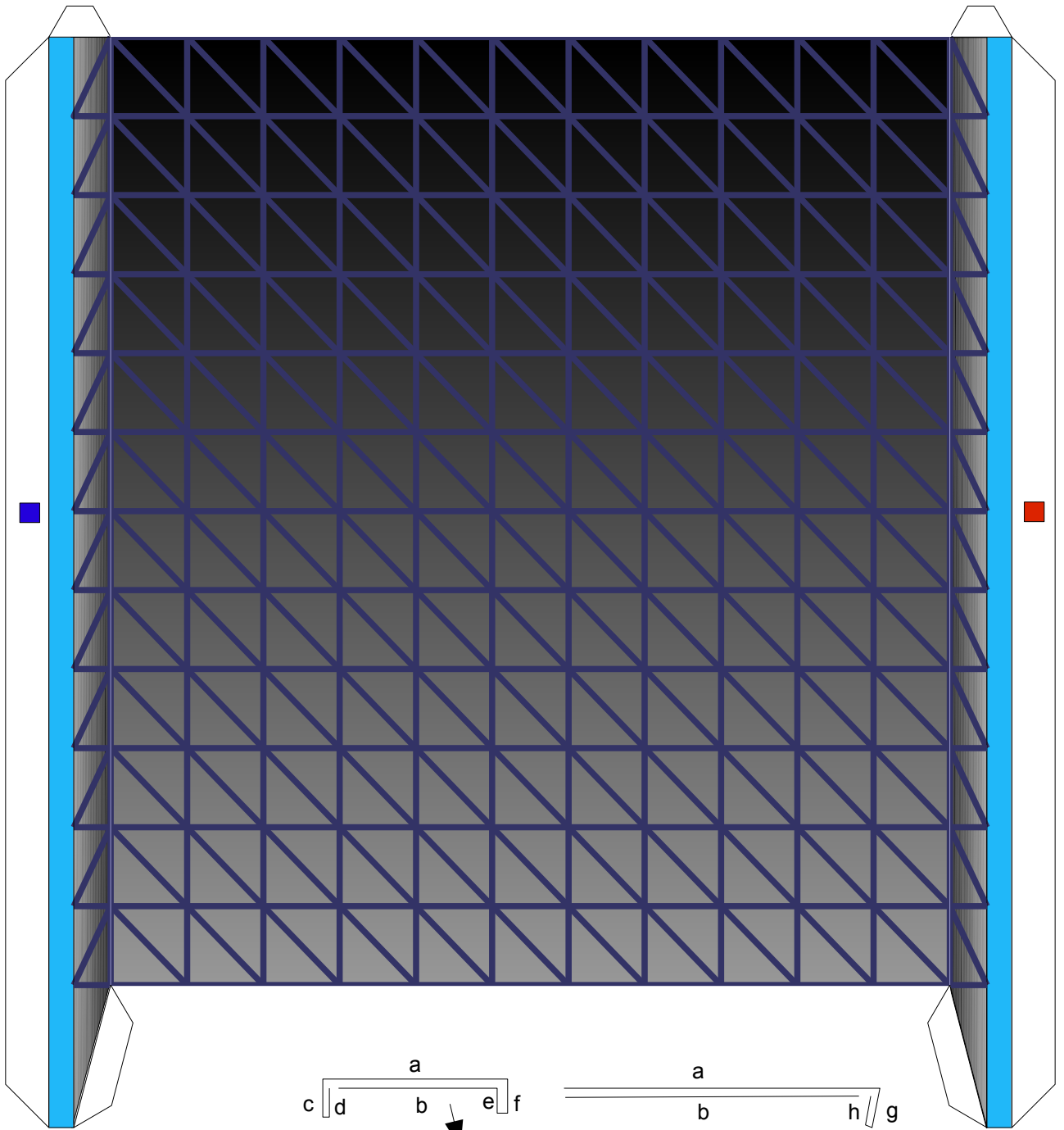


Voir feuille 10

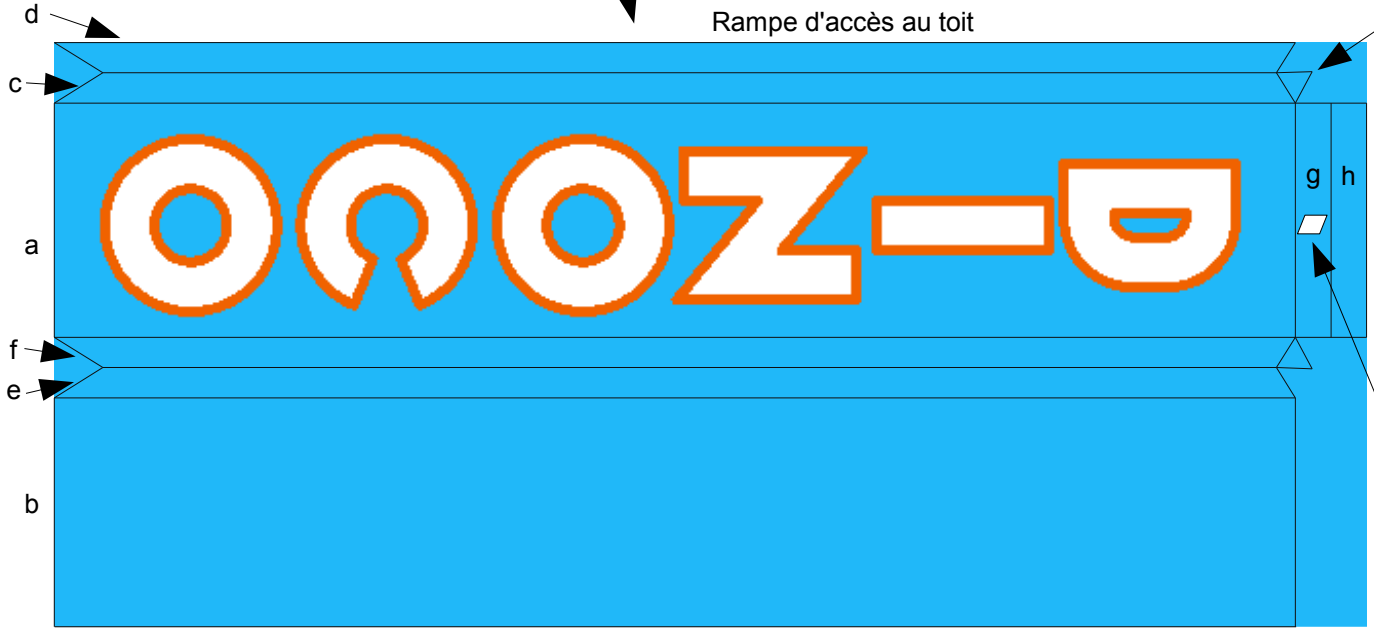






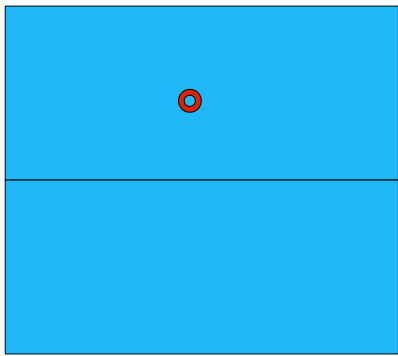


Coller entre g et h

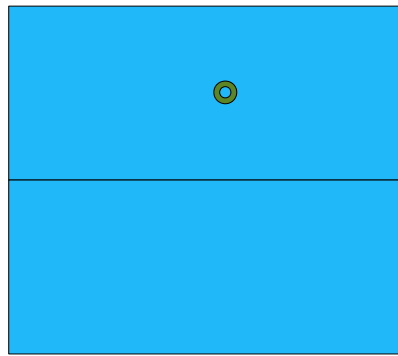


Voir feuille 11

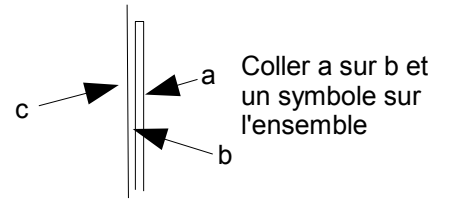




Coller devant le toit feuille 5

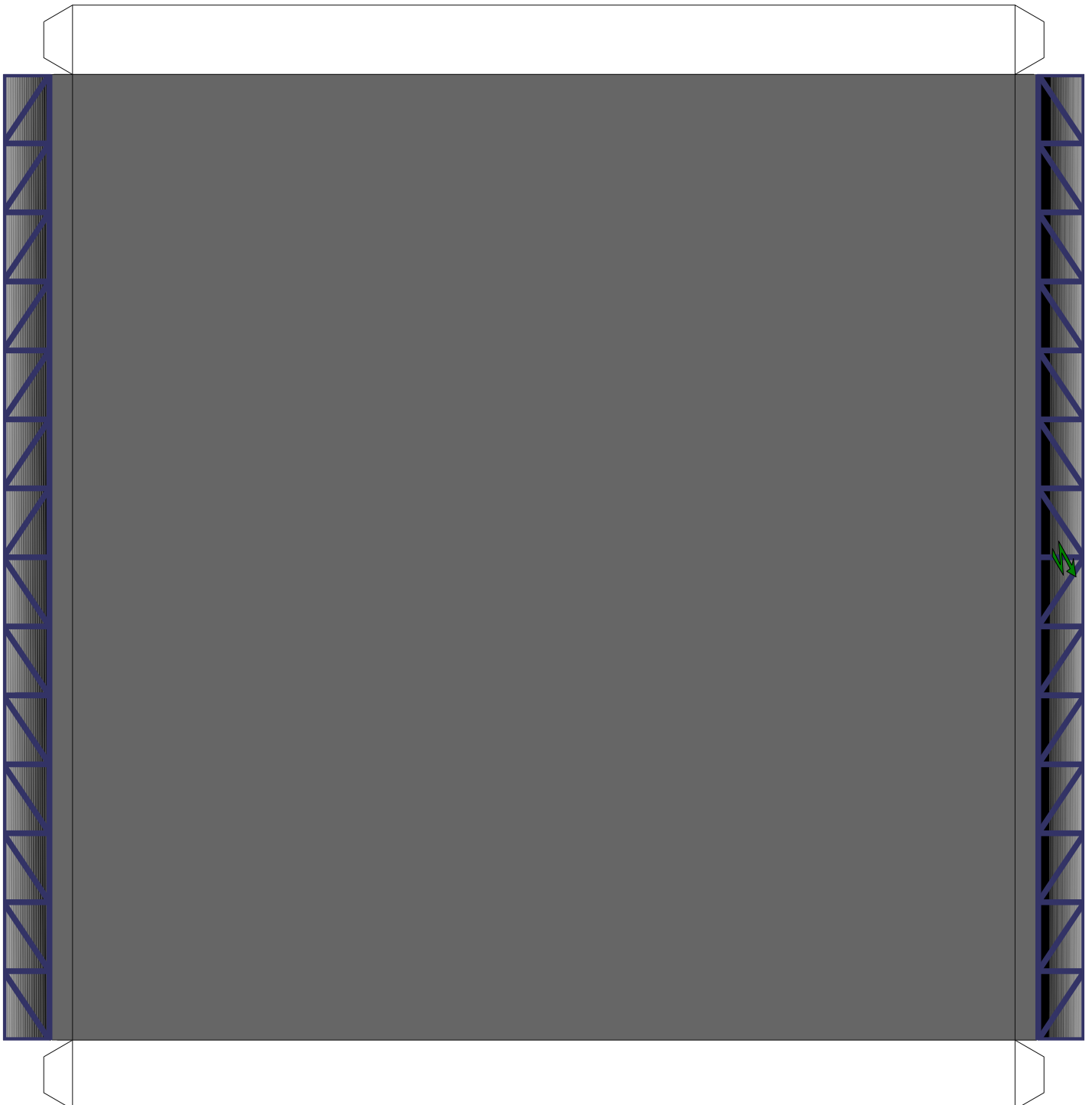


Coller devant le toit feuille 7



c

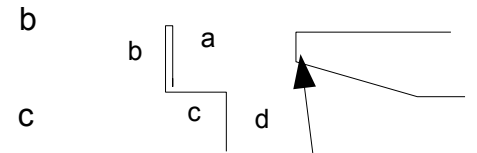
Plancher du stand



Coller la rampe ici

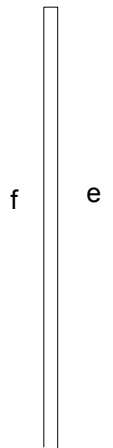
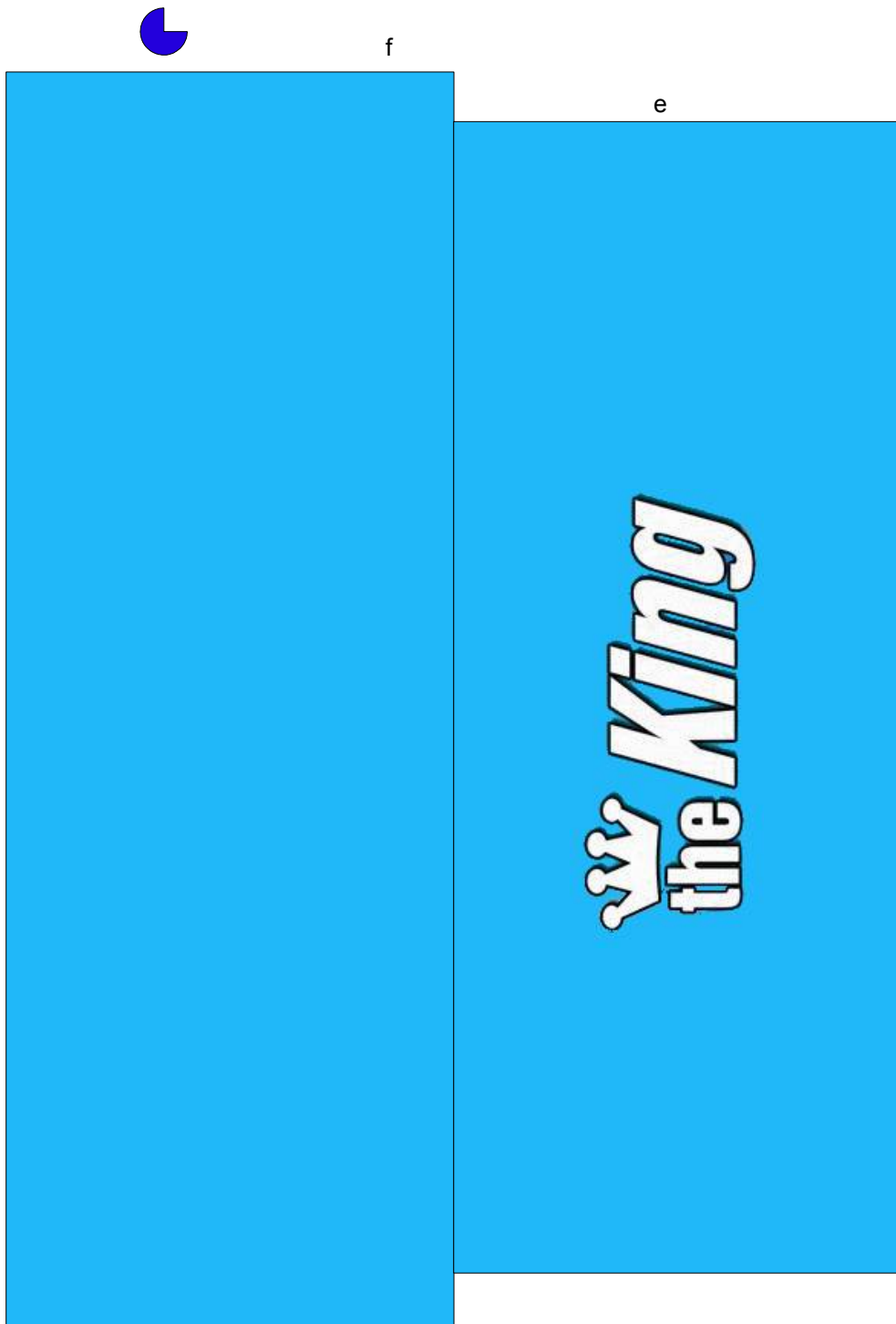


a Coller a sur b, mettre c horizontal et d vertical

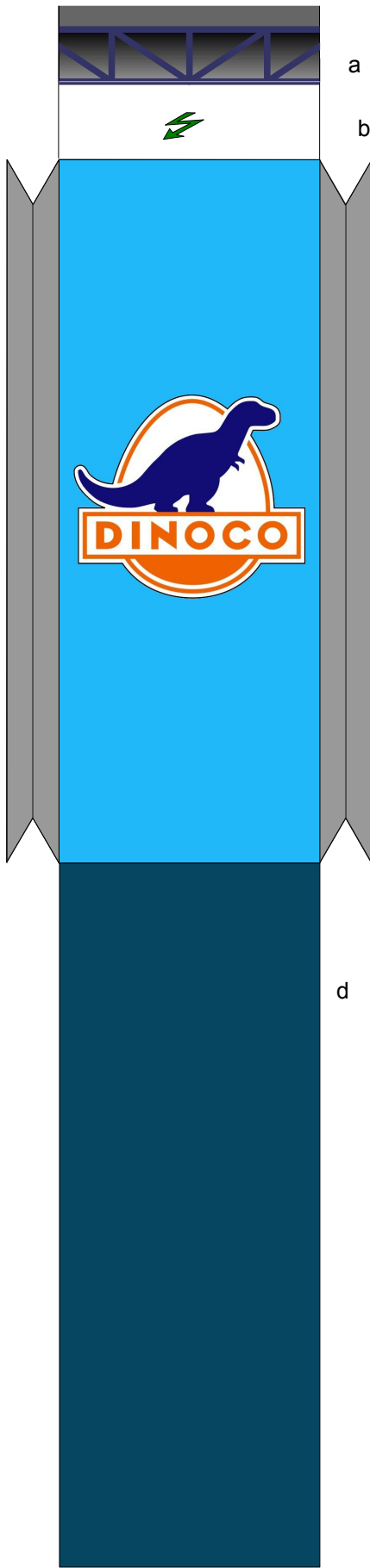


d Coller sur le devant des toits

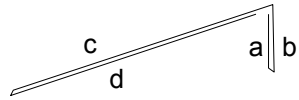
Détourer les lettres sans les détacher de la partie d



Coller e sur f

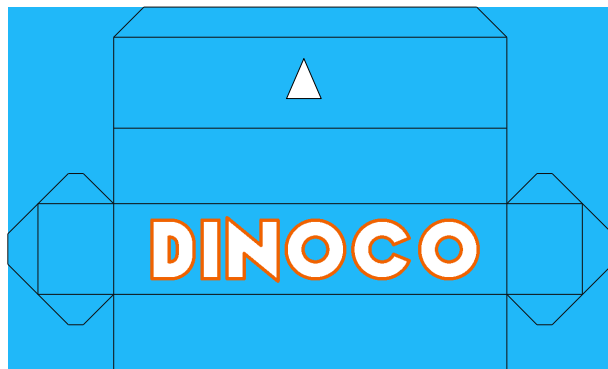
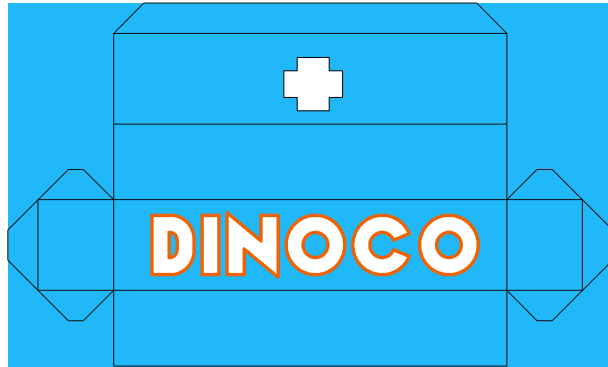


Coller a sur b et d sous c



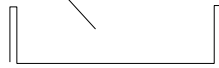
Coller la rampe sur le devant du plancher

Fabriquer deux boîtes fermées



c (partie bleue)

Coller les flancs gris l'un sur l'autre et les relever



d

