



VERSION 0.56

Readme V1

Information : this tuto will help you to make LAN with Starcraft 2. Of course, you don't need internet connection to do LAN. If you use this tools to make LAN with friends, you are OK with the heart & the soul of Starcraft. But use this tools on internet is a violation of the TOS of Blizzard.

Note : This readme may be updated. Please come see if there are new readme here:

<http://www.battle4sc2.com/readme>

Sum up

Start with download every files needed :	2
Download, install and patch to 1.3.6.....	3
Hack Starcraft 2 : Copy paste files needed.....	6
Use the program.....	7
Join to a server on Hamachi	8
Installation.....	8
How play now I found gamer ?.....	9
Join a server on LAN	10
Host and create a game.....	10

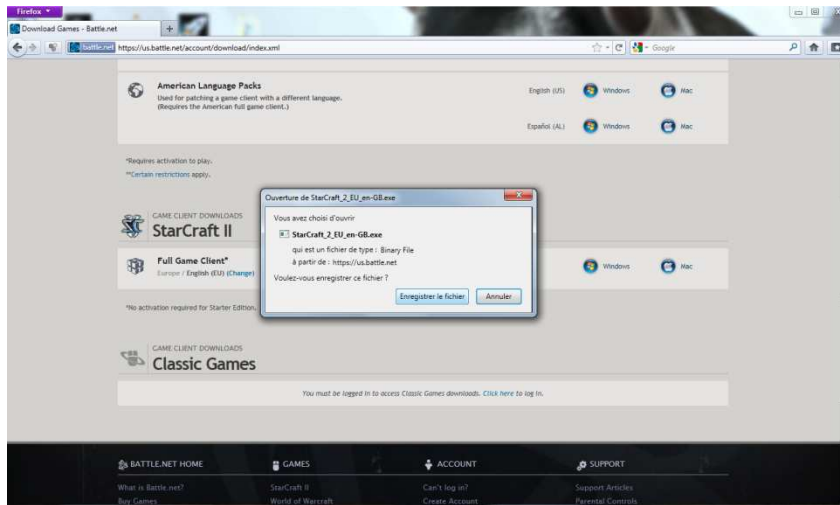
Start with download every files needed :

The client :	http://www.fileserve.com/list/YPvmTzy https://us.battle.net/account/download/
Patches 1.3.6 :	Just lets the game auto update.
Cache for this version of SF	http://www.fileserve.com/file/vRvMdug http://www.mediafire.com/?ijuw2oj2ojjiqad
SF 0.56	http://www.battle4sc2.com/

Note: SF means StarFriend, the name of the tool and the name of the team which develop the tool

Download, install and patch to 1.3.6

- Download the P2P official program



- Just launch it and select the folder where he will download 7GB.
- Download patch from link above
- Now you have the client, let's start the installation :

<input type="checkbox"/>	Installer Tome 1.MPQE	10/08/2011 19:20	Fichier MPQE	7 343 262 Ko
<input type="checkbox"/>	Installer UI 1.MPQ	09/08/2011 21:41	Fichier MPQ	24 466 Ko
<input type="checkbox"/>	Installer UI 2.MPQE	09/08/2011 21:41	Fichier MPQE	40 672 Ko
<input checked="" type="checkbox"/>	Installer.exe	09/08/2011 20:17	Application	2 447 Ko
<input checked="" type="checkbox"/>	sc2-1.3.6-enGB.exe	10/08/2011 20:41	Application	302 909 Ko

- Launch the exe of installation

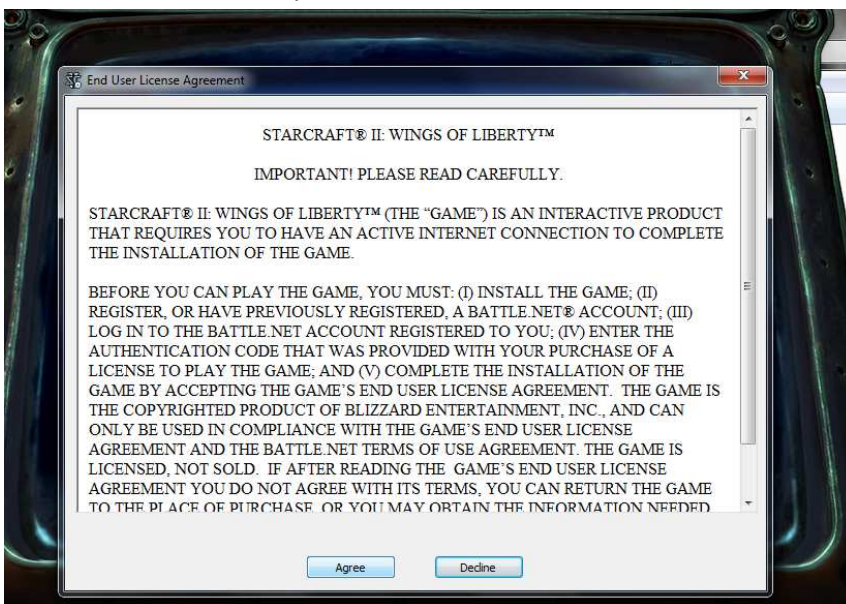


- Click on INSTALL with the orange square. We recommend to have internet at this point

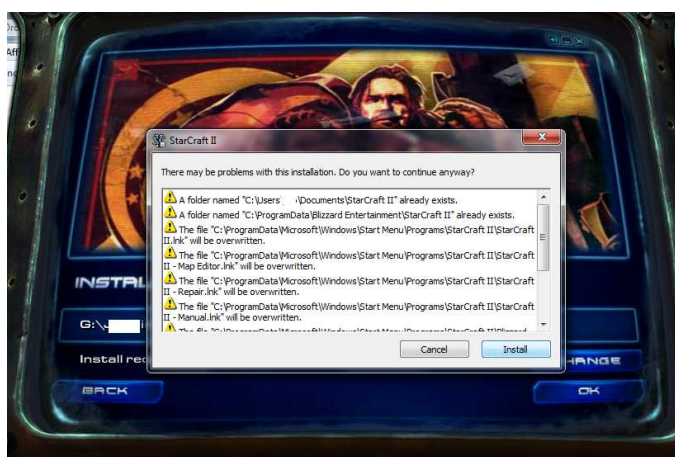
- If you see this page, it that already exists a SC2 installed on your PC. Click again on INSTALL



- We have not found a way for refuse the TOS and install Starcraft 2, so Accept the TOS ...

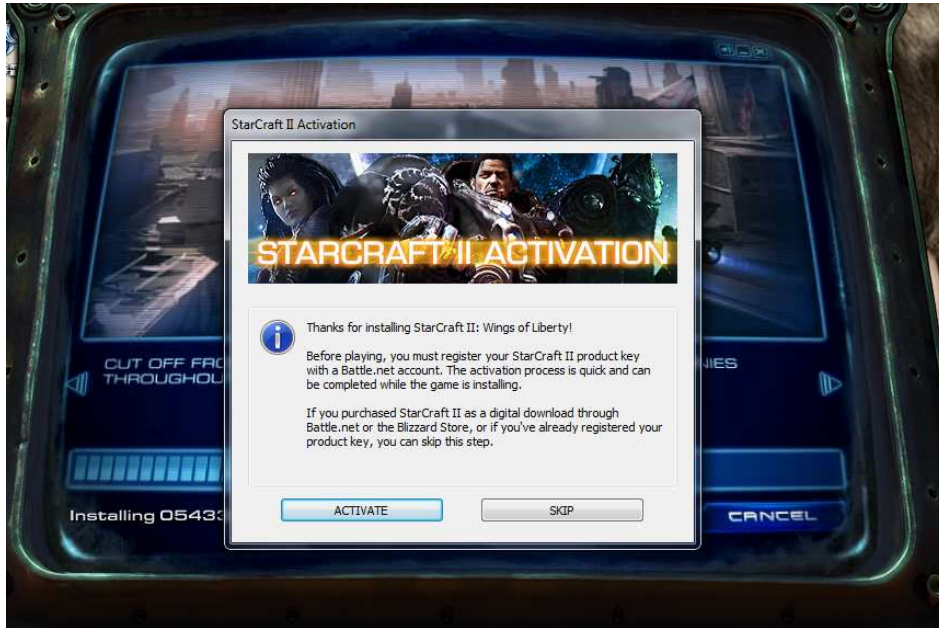


- If you see that, click on Install, no problem ...

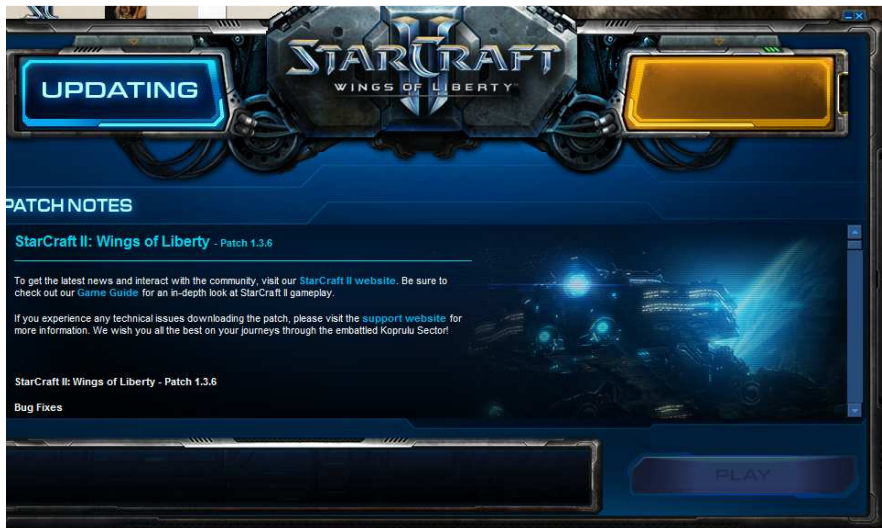


- You can now stop your internet connection during the installation.

- Installation ended, SKIP the activation



- Quit the windows which open automatically



- For patch, just launch the patch.exe, here `sc2-1.3.6-enGB.exe`

Installer Tome 1.MPQE	10/08/2011 19:20	Fichier MPQE	7 343 262 Ko
Installer UI 1.MPQ	09/08/2011 21:41	Fichier MPQ	24 466 Ko
Installer UI 2.MPQE	09/08/2011 21:41	Fichier MPQE	40 672 Ko
Installer.exe	09/08/2011 20:17	Application	2 447 Ko
sc2-1.3.6-enGB.exe	10/08/2011 20:41	Application	302 909 Ko

- End

Hack Starcraft 2 : Copy paste files needed

You just have done the installation of an Official Starcraft 2. If you have an account Bnet 2.0 and can now log on and play.

- You will need to copy paste the Cache

Installer Tome 1.MPQE	10/08/2011 19:20	Fichier MPQE	7 343 262 Ko
Installer UI 1.MPQ	09/08/2011 21:41	Fichier MPQ	24 466 Ko
Installer UI 2.MPQE	09/08/2011 21:41	Fichier MPQE	40 672 Ko
Installer.exe	09/08/2011 20:17	Application	2 447 Ko
MapCache_1.3.6.rar	14/08/2011 11:46	Archive WinRAR	200 973 Ko
sc2-1.3.6-enGB.exe	10/08/2011 20:41	Application	302 909 Ko

- If you are *XP users*, copy it to “X:\Documents and Settings\All Users\Application Data\” and you will see folder structure of “X:\Documents and Settings\All Users\Application Data\Blizzard Entertainment\Battle.net”.
- If you are Windows 7 users, copy it to “X:\ProgramData\” and you will see folder structure of “X:\ProgramData\Blizzard Entertainment\Battle.net”.

Note : folder are sometimes hidden :

Program Files (x86)	14/08/2011 10:35
ProgramData	07/08/2011 16:39
Programmes	22/07/2011 17:05
wamp	20/06/2011 11:34
Windows	27/07/2011 12:26
.htaccess	24/07/2011 14:37
1.jpg	04/07/2011 11:06
2.jpg	04/07/2011 11:08
3.jpg	04/07/2011 11:09
4.jpg	04/07/2011 11:12

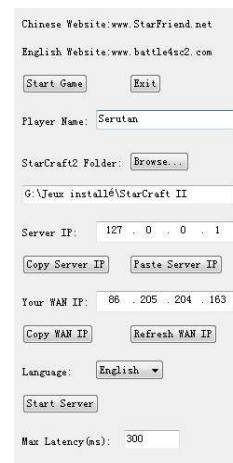
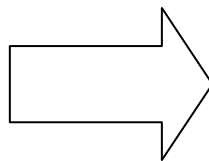
- Open your SC2 folder. You may see a folder named “Blizzard Entertainment”. You need to paste our Cache. You will see folder structure of “SC2folder\Blizzard Entertainment\Battle.net
- Now take the Starfriend Archive and extract file where you want.
- Done, you can launch StarFriend_0.???.exe

Use the program

- Launch Starfriend_0.56.exe. The first, time you have to put where is installed your Starcraft 2. It's looking for the SC2 directory (patched at 1.3.6)



- Click on “OK” for valid
- Now change the language of the program : (from Mandarin to English)



SF is now correctly installed.

- You can click right on the name of the channel and select “Open the chat window”
In this way, you can speak to all gamers connected. There are always a gamer ready connected ^^ . Don’t forget to say your version of SF.
- You can view Hamachi IP of every connected easily
Example : for Lian-PC it’s

How play now I found gamer ?

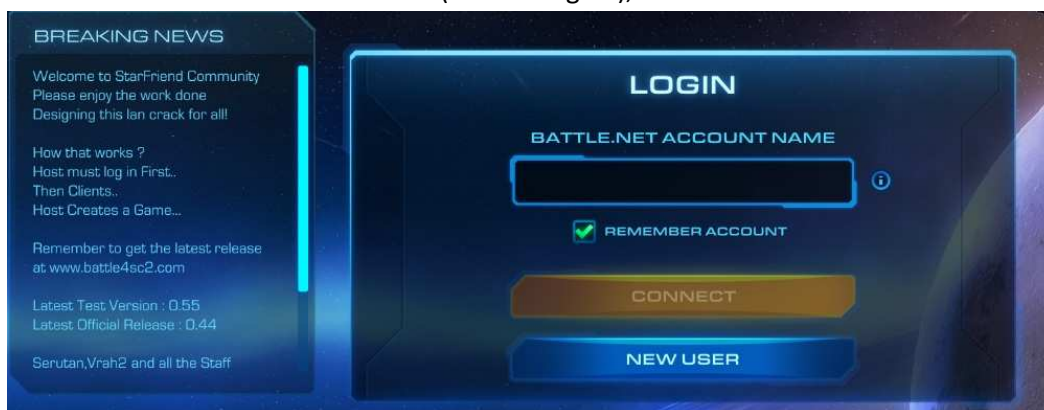
Example : I will play vs Lian (and he will lose, of course)



Paste the IP of Lian-Pc on Hamachi manually or auto (right clicks on Lian-Pc on Hamachi, select “copy the IP (v4)” and on Starfriend Program click on Paste Server IP)

Now you need to wait the signal of Lian-PC: he MUST connect to the server the first. When I say must, it’s MUST. If you forgot, no problem: exit the server and create again.

When he is connected on the server (so he is log on), clic on Start Game.



- Username for log : gg@gl.hf
- Password : gg

You are now connected : you can speak to the host, and join the party when the host will have created and invit you.

Join a server on LAN

It's the same thing than on Hamachi. But the IP may looks like 192.168.1.XXX or 192.168.0.XXX (with $1 < XXX < 254$)

Host and create a game

Host

A host which create a party join his server. So the IP that he needs to put on Server IP is 127.0.0.1

127.0.0.1 is ever the IP of the host.

More of that, SF limits the connect to those which have too much ping. If you have too much, you can't play : you order to that unit to move and it move only after 2 sec, it's not correct.

But the limit of SF (default : 300ms) is in some be up to 400 ms and allow foreign friend to connect to you.

Just launch clic on Start server for start the server.

Click after on "Start Game".

Create a Game

User : gg@gl.hf

Password : gg

After log in, you can tell to your friend that now he can join you.

Go in your refrigerator take a beer. Really do that, in that way you don't lose your time.

Why I tell that?

Because when you just log in your game is charging the map list. If you don't stay on the main page (after log) until the red message become white, you will not have the full list map



I wait until see white characters :



Now you can create easily a game :

Go to Multiplayer, then Create game, choose your map, selec CREATE GAME

For add a friend, clic there and selec friend to add.



Don't forget to say "gl & hf" when you start to play ! ;)

Have fun !

Thanks to the SF team, my team, V.I.P, official Tester Group, others testers, and the others that I forgot.

Serutan