



Hyper 212 EVO

User Manual

510005960-GP

Check the following items in your package. Contact your retailer if any item is damaged or missing.

Parts

A



CPU Cooler x1

B



Fan bracket x2

C



Stand-off x4

D



Thermal grease x1

E



Back Plate x1

F



Retention Plate x1

G



Nuts x4

H



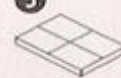
Nut Setter x1

I



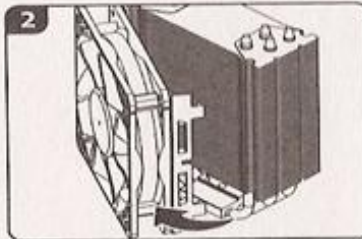
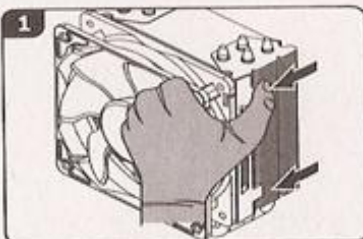
Screws x4

J



Rubber Pads x4

Remove Fan



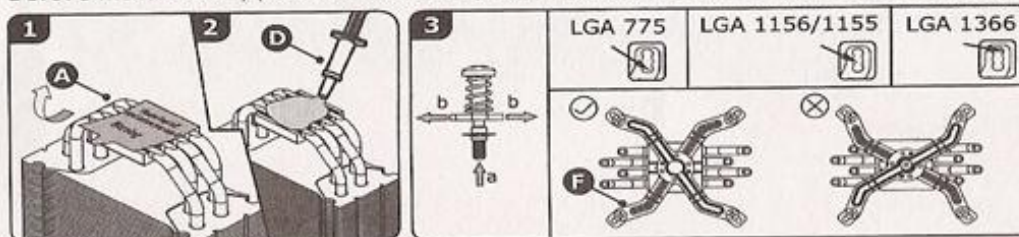
CAUTION

- Be careful of the sharp edges to avoid injury.
- Keep away from the reach of children.

Remove the fan by gently release the clip.

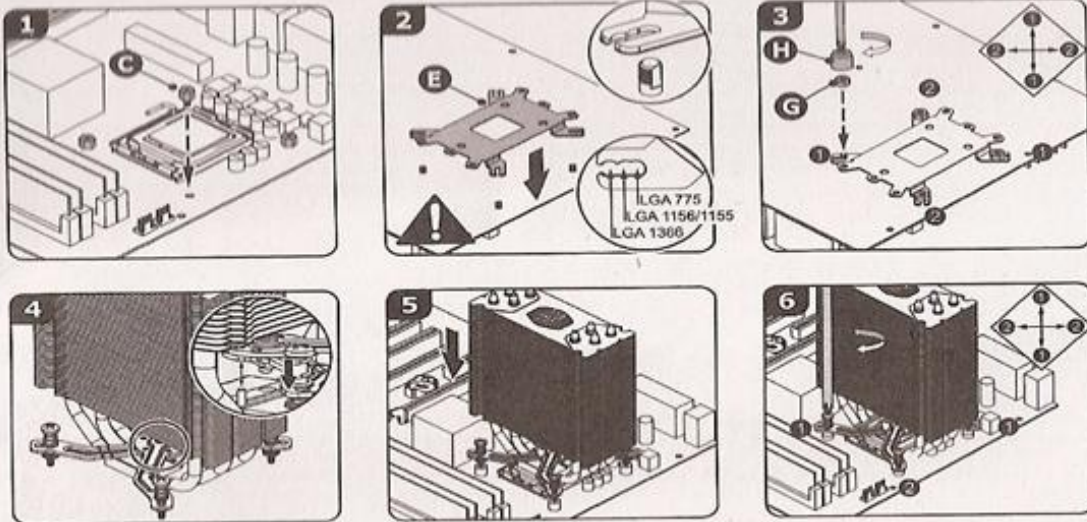
Installation Procedures

Before installation, please select the proper type suitable for your CPU platform.



1. Before use, please remove the protective layer on the bottom of the cooler.
2. Apply a thin layer of thermal grease onto the surface of the cooler base.
3. There are three different sets of holes available for Intel sockets (LGA 1366 / 1156 / 1155 / 775). Please adjust the pin and screw position based on your CPU specification.

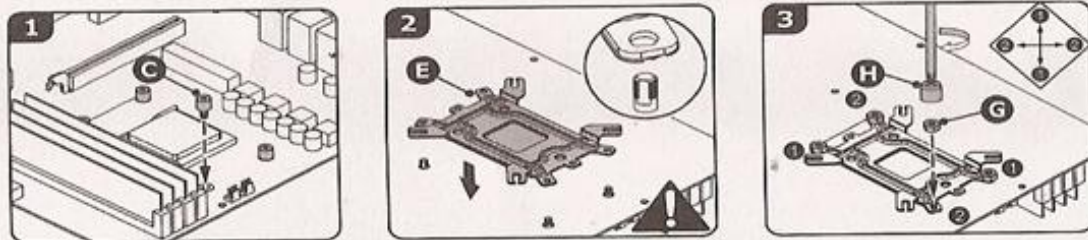
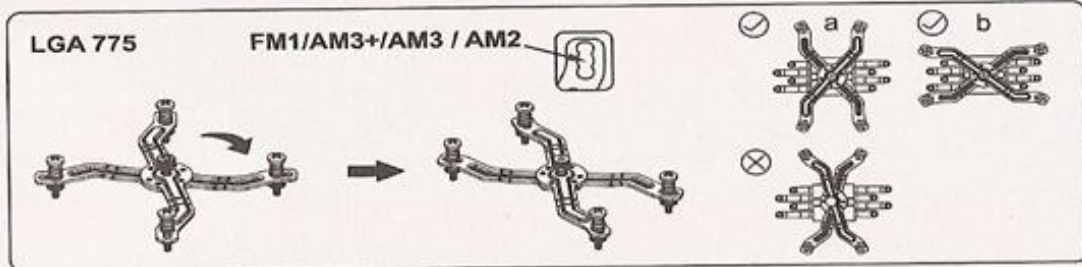
Intel Socket LGA 1366 / 1156 / 1155 / 775



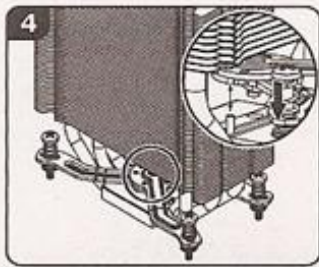
1. Stick the stand-offs around the mounting holes of the motherboard.
2. Turn over the motherboard and place the back plate in accordance with the positions of stand-offs.
3. Tighten up the nuts diagonally at the same time.
4. Place the retention plate onto the cooler.
5. Place the cooler onto the surface of CPU.
6. Tighten up the screws diagonally at the same time.

!
Don't peel off the insulating tape.
The insulating tape must face
the motherboard.

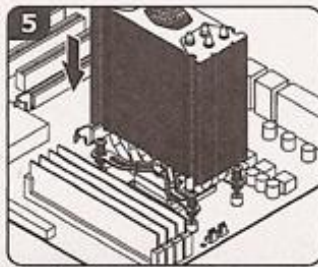
AMD Socket FM1/AM3+/AM3 / AM2



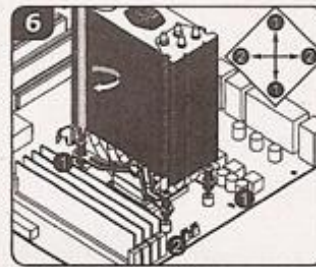
- Adjust the retention plate to AMD socket position.
1. Stick the stand-offs around the mounting holes of the motherboard.
 2. Turn over the motherboard and place the back plate in accordance with the positions of stand-offs.
 3. Tighten up the nuts diagonally at the same time.



4. Place the retention plate onto the cooler.



5. Place the cooler onto the surface of CPU.

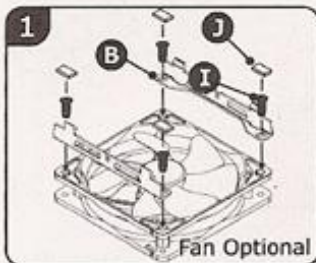


6. Tighten up the screws diagonally at the same time.

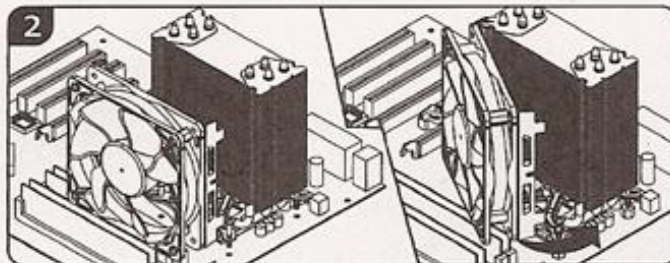


Don't peel off the insulating tape.
The insulating tape must face
the motherboard.

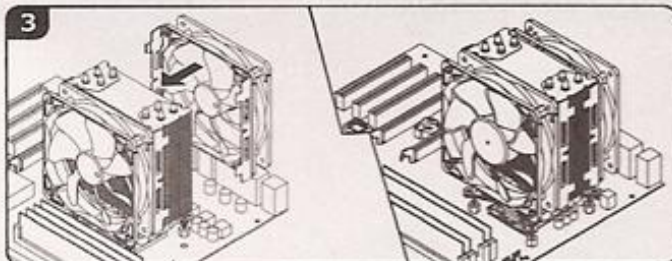
Fan Installation



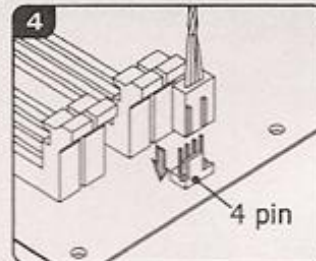
1. Attach the fan brackets to the fan.



2. Attach the fan to the cooler.



3. Depending on your need, you could mount 2nd fan to the cooler.



4. Connect the power cable.

• Picture for reference only

• Information in this document is subject to change without notice