

Machir Bay Shawl



Machir Bay is a Triangular Shawl with structur elements.

He will be knitted from top to down.

Size after blocking: 150m x 70cm

You will need:

Shown yarn: 2 skeins MerinoSeideSingle 437y / 100g in different colors.
It's also possible to knit it with MerinoSingle 382y / 100g

Needles: circular 80cm **4mm (US 6)** if you are a loose knitter I recommend a smaller size 3,5 or 3.75mm (US 4 or 5)

Gauge: in stockinette stitch 24 sts / 35 rows = 10x10cm

Tapestry needle**4 stitch markers****Glossary:**

st(s): stitch(es)

k: knit

p: purl

m1: make one left

m1r: make one right

slp1 wyib: slip 1 st purlwise with yarn in back

slp3 wyif: slip 3sts purlwise with yarn in front

k1 uls: knit 1 under the loose strand. Insert the right hand needle under the loose strand 2 rows below and knit the next stitch, catching the strand.

RS: right side

WS: wrong side

m: marker

pm: place marker

slpm: slip marker

C1: 1. color (shown color: Schiefer (dark grey))

C2: 2. color (shown color: Silber (light grey))

Set up:

Cast on 2 sts with **C1** and knit 12 rows in garter stitch.

Do not turn at the end of row 12!

Turn your work 90° clockwise, pick up and knit 5 stitches, turn your work once again 90° clockwise and pick up and knit 2 stitches more.

Now you have **9sts** on your needle.

Turn your work now and knit the first wrong side row:

WS: k2, pm, p2, pm, p, pm, p2, pm, k2

Body:

Row 1 (RS): k2, slpm, m1r, k to marker, m1r, slpm, k, slpm m1l, k to marker, m1l, slpm, k2

Row 2 (WS): k2, slpm, p to the last marker, slpm, k2

Change color to **C2** and repeat Row 1 + 2 once.

You knit everytime 4 Rows in **C1** and 2 Rows in **C2**.

Repeat this 6 Rows **15** times.

A total of **16** times.

Now you have **197sts** on your needles.

If you like to knit the shawl bigger, you have the possibility to add here 2 times the whole body repeat (12 Rows) In case you choose a yarn who has 400m /437y on 100g / 3.5 oz, you will have enough yarn left.

Pattern 1:

Change to color **C1**

Row 1 (RS): k2, slpm, m1r, „k1, slp1 wyib“ repeat to marker, m1r, slpm, k1, slpm, m1l, „slp1 wyib, k1“ repeat to marker, m1l, slpm, k2

Row 2 (WS): k2, slpm, p to the last marker, slpm, k2

Change color to **C2** and repeat Row 1 + 2 twice.

You knit everytime 2 Rows in **C1** and 4 Rows in **C2**.

Repeat this 6 Rows 3 times.

A total of **4** times.

Now you have **245sts** on your needles.

Pattern 2 with Chart:

Change to color **C1**

Row 1 (RS): k2, slpm, m1r, k1, repeat Chart (page 4) to marker, m1r, slpm, k1, slpm, m1l, repeat Chart until 1 st before marker, k1, m1l, slpm. k2

Row 2 (WS): k2, slpm, p to the last marker, slpm, k2

Change color to **C2** and repeat Row 1 + 2 once.

You knit everytime 2 Rows in **C1** and 2 Rows in **C2**.

Repeat this **4** Rows **11** times.

A total of **12** times or **6** times the full chart.

Here a little Video for helping with the Pattern 2. Attention the stitch number in this video is different.

<http://www.knittingstitchpatterns.com/2014/10/trellis.html?m=1>

Pattern 2 written description:

Change to color **C1**

Row 1 (RS) (C1): k2, slpm, m1r, [k1, slp3 wyif] repeat to next marker, m1r, slpm, k1, slpm, m1l, [slp3 wyif, k1] repeat to next marker, m1l, slpm, k2.

Row 2 (WS) (C1): k2, slpm, p to the last marker, slpm, 2re.

Row 3 (RS) (C2): k2, slpm, m1r, k2, [k, k1 uls, k2] repeat to marker, m1r, slpm, k1, slpm, m1l, k1, [k1, k1 uls, k2] repeat to marker, k1, m1l, slpm, k2.

Row 4 (WS) (C2): k2, slpm, p to last marker, slpm, k2.

Repeat this **4** Rows **11** times. A total of **12** times.

Now you have **341sts** on your needles.

Change again to **C1** and repeat the whole **Pattern 1**.

Now you have **389sts** on your needles

Change to **C1** and knit Row 1 and 2 from the Body once.

End:

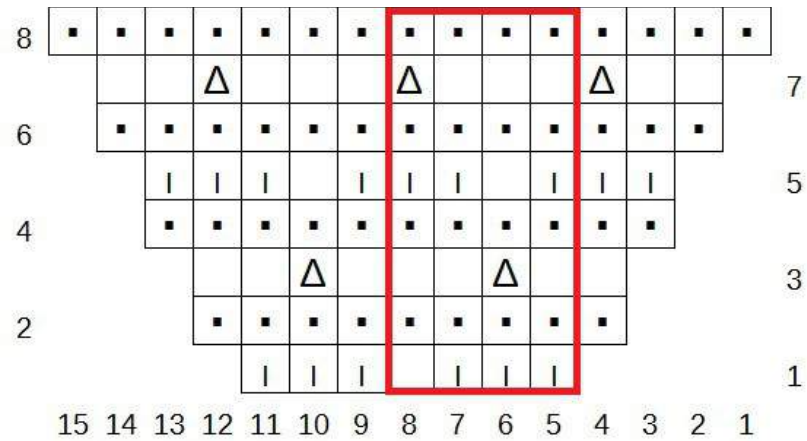
Row 1 (RS): k2, slpm, m1r, „p, k“ repeat to marker, m1r, slpm, k, slpm, m1l, „k, p“ repeat to marker, m1l, slpm, k2



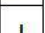
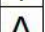

Row 2 (WS): k2, slpm. „p, k“ to marker, slpm, p, slpm, „k,p“ to marker, slpm. k2

Repeat this two Rows as many as you like.

Cast off, weave all ends in, wash and block it.

Done!

Pattern 2 Chart:**Chartlegend:**

	knit
	purl
	Slip 1 stitch with yarn in front of work
	Insert the right hand needle under the loose strand 2 rows below and knit the next stitch, catching the strand.
	Repeat of the chart



Inspiration

My inspiration for this unique shawl was the fascinating slate cliff at Machir Bay on Islay Scotland .
The beautiful , exciting structure of slate was incredibly fascinated .

