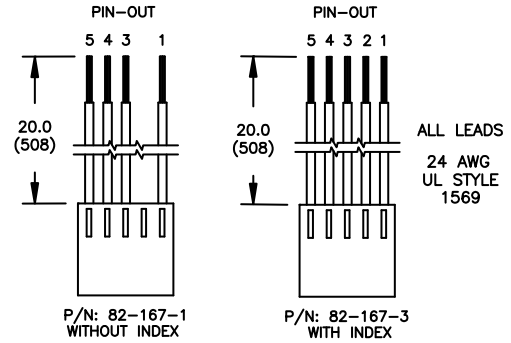


Optional Leadwire Assemblies



*See individual motor series outline drawings for applicable encoder dimensions

| E30A Encoder Data | Symbol | Units | Value |
|-------------------------------|----------------|-------|--|
| Available Resolutions | - | - | 100, 200, 256, 360, 500, 512, 1000, 1024 |
| Output | - | - | 2-Channel Quadrature Output |
| Output Interface | - | - | TTL Compatible |
| Supply Voltage | V_{CC} | VDC | 4.5 to 5.5 |
| Supply Current | I_{CC} | mA | 40 max |
| High Level Output Voltage | V_{OH} | V | 2.4 min |
| Low Level Output Voltage | V_{OL} | V | 0.4 max |
| Maximum Operating Frequency | f_{max} | kHz | 100 |
| Maximum Operating Temperature | θ_{max} | °C | -40 to +100 |
| Encoder Weight (Mass) | W_E | oz | 2.0 |
| | | g | 57 |

| E30A Connection Chart | | |
|-----------------------|--------|---------------|
| Pin | Color | Function |
| 1 | Black | Ground |
| 2 | - | No Connection |
| 3 | Yellow | Channel A |
| 4 | Red | Vcc |
| 5 | Blue | Channel B |

| Options |
|---|
| <ul style="list-style-type: none"> Differential line drive with complementary outputs. Alternate leadwire assemblies. |

Notes:

¹ Motor ball bearings are required for optimal performance.

E30B

| E30B Encoder Data | Symbol | Units | Value |
|-------------------------------|----------------|-------|--|
| Available Resolutions | - | - | 256, 360, 500, 512 |
| Output | - | - | 3-Channel Quadrature Output with Index Pulse |
| Output Interface | - | - | TTL Compatible |
| Supply Voltage | V_{CC} | V | 4.5 to 5.5 |
| Supply Current | I_{CC} | mA | 85 max |
| High Level Output Voltage | V_{OH} | V | 2.4 min |
| Low Level Output Voltage | V_{OL} | V | 0.4 max |
| Maximum Operating Frequency | f_{max} | kHz | 100 |
| Maximum Operating Temperature | θ_{max} | °C | -40 to +100 |
| Encoder Weight (Mass) | W_E | oz | 2.0 |
| | | g | 57 |

| E30B Connection Chart | | |
|-----------------------|--------|-----------|
| Pin | Color | Function |
| 1 | Black | Ground |
| 2 | Green | Index |
| 3 | Yellow | Channel A |
| 4 | Red | Vcc |
| 5 | Blue | Channel B |

| Options |
|---|
| <ul style="list-style-type: none"> Differential line drive with complementary outputs. Alternate leadwire assemblies. |

Notes:

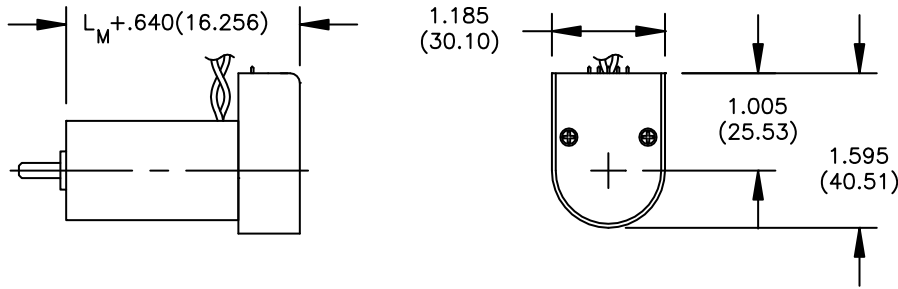
¹ Motor ball bearings are required for optimal performance.

² 2.7k Ohm pull-up resistors recommended for E30B.

This document is for informational purposes only and should not be considered as a binding description of the products or their performance in all applications. The performance data on this page depicts typical performance under controlled laboratory conditions. Actual performance will vary depending on the operating environment and application. AMETEK reserves the right to revise its products without notification. The above characteristics represent standard products. For products designed to meet specific applications, contact PITTMAN Motor Sales Department.

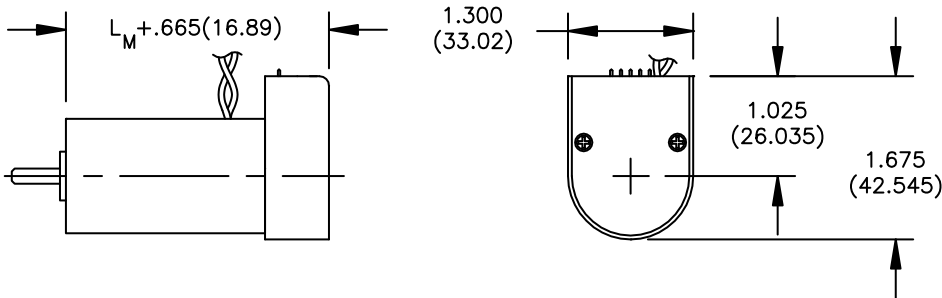
For use with the following motor series

8690 Series Motor with E30



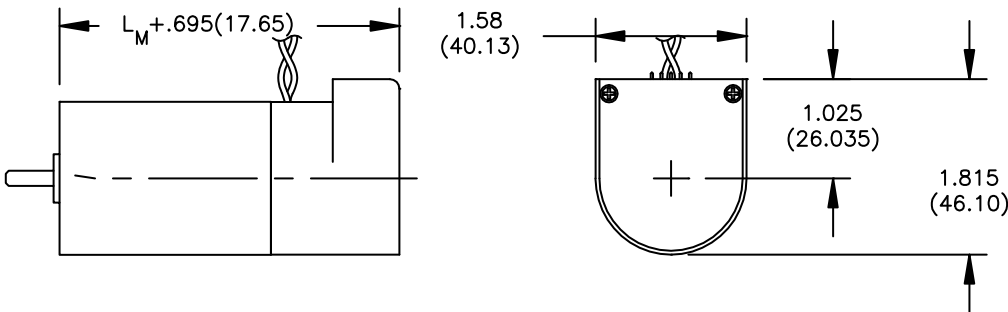
| Motor | Length L _M max in (mm) |
|-------|--------------------------------------|
| 8691 | 1.798 (45.67) |
| 8692 | 1.923 (48.84) |
| 8693 | 2.173 (55.19) |

8220 Series Motor with E30



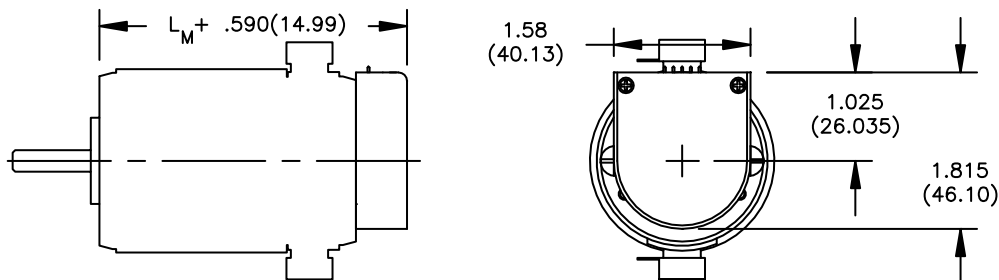
| Motor | Length L _M max in (mm) |
|-------|--------------------------------------|
| 8222 | 2.070 (52.58) |
| 8223 | 2.195 (55.75) |
| 8224 | 2.445 (62.10) |

9230 Series Motor with E30



| Motor | Length L _M max in (mm) |
|-------|--------------------------------------|
| 9232 | 1.828 (46.43) |
| 9233 | 2.203 (55.96) |
| 9234 | 2.403 (61.04) |
| 9235 | 2.703 (68.66) |
| 9236 | 3.053 (77.55) |
| 9237 | 3.353 (85.17) |

14200 Series Motor with E30

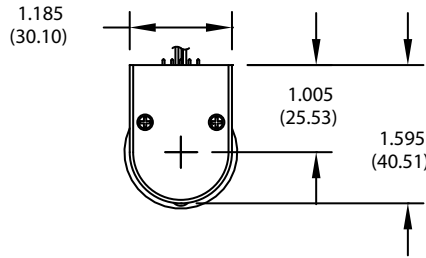
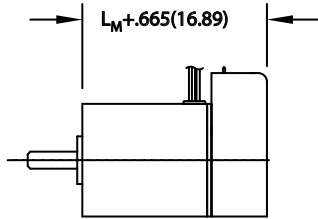


| Motor | L _M max in (mm) |
|-------|-------------------------------|
| 14201 | 2.953 (75.01) |
| 14202 | 3.203 (81.36) |
| 14203 | 3.703 (94.06) |
| 14204 | 4.078 (103.6) |
| 14205 | 4.453 (113.1) |
| 14206 | 4.953 (125.8) |
| 14207 | 5.703 (144.9) |

This document is for informational purposes only and should not be considered as a binding description of the products or their performance in all applications. The performance data on this page depicts typical performance under controlled laboratory conditions. Actual performance will vary depending on the operating environment and application. AMETEK reserves the right to revise its products without notification. The above characteristics represent standard products. For products designed to meet specific applications, contact PITTMAN Motor Sales Department.

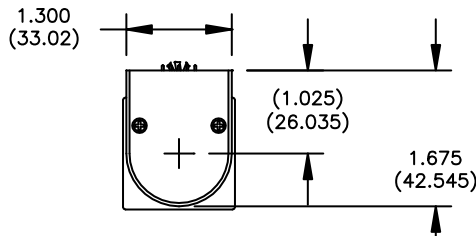
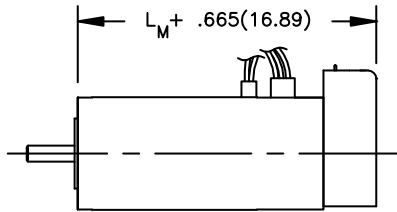
For use with the following motor series

1300 Series Motor with E30



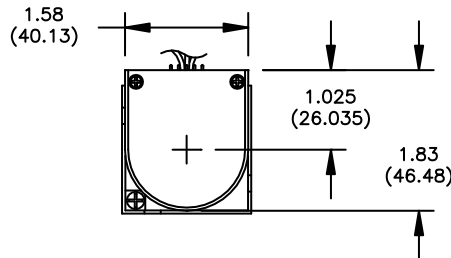
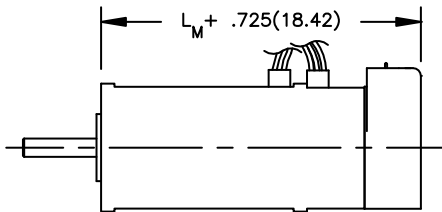
| Motor | Length L _M max in (mm) |
|-------|-----------------------------------|
| 1301 | 1.500 (38.10) |
| 1302 | 2.000 (50.80) |
| 1303 | 2.500 (63.50) |

3400 Series Motor with E30



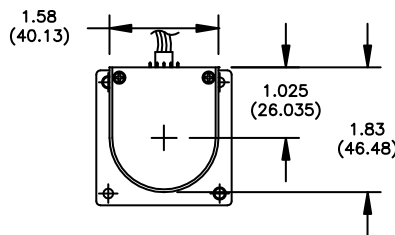
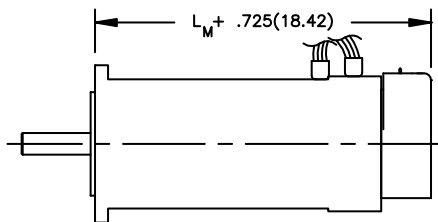
| Motor | Length L _M max in (mm) |
|-------|-----------------------------------|
| 3411 | 2.322 (58.98) |
| 3412 | 2.722 (69.14) |

4400 Series Motor with E30



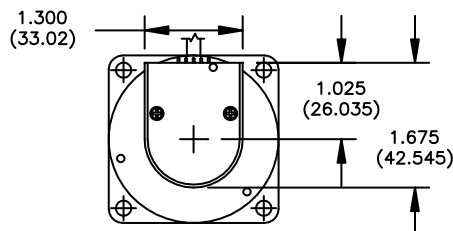
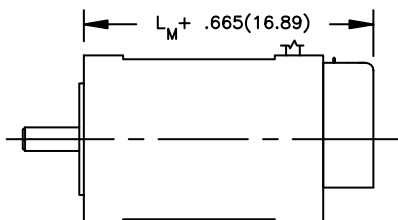
| Motor | Length L _M max in (mm) |
|-------|-----------------------------------|
| 4411 | 2.655 (67.44) |
| 4412 | 2.955 (75.06) |
| 4413 | 3.255 (82.68) |

5400 Series Motor with E30



| Motor | Length L _M max in (mm) |
|-------|-----------------------------------|
| 5411 | 3.165 (80.39) |
| 5412 | 3.665 (93.09) |
| 5413 | 4.165 (105.79) |

N2300 Series Motor with E30



| Motor | Length L _M max in (mm) |
|-------|-----------------------------------|
| N2311 | 1.532 (38.91) |
| N2312 | 1.982 (50.34) |
| N2313 | 2.482 (63.04) |
| N2314 | 2.982 (75.74) |

This document is for informational purposes only and should not be considered as a binding description of the products or their performance in all applications. The performance data on this page depicts typical performance under controlled laboratory conditions. Actual performance will vary depending on the operating environment and application. AMETEK reserves the right to revise its products without notification. The above characteristics represent standard products. For products designed to meet specific applications, contact PITTMAN Motor Sales Department.